

# Initial Configuration

## Connection to SafeUTM Web Interface

If you haven't installed SafeUTM yet, please see the [Installation Process](#) article.

After you have successfully installed SafeUTM you can start its initial configuration.

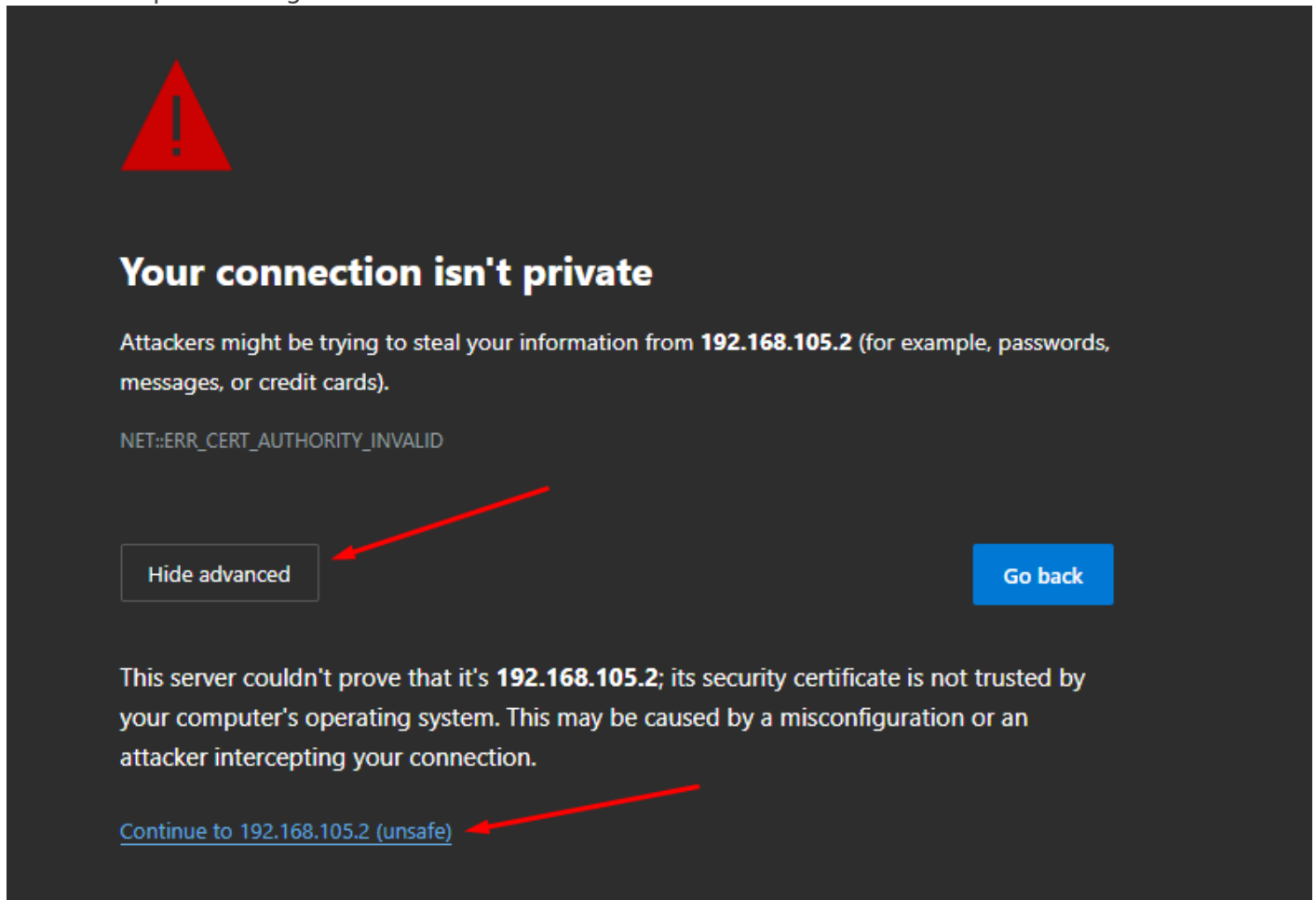
Start an internet browser on any local network computer, for example, Mozilla Firefox or Google Chrome (Internet Explorer is not supported). In the address bar type in the local IP address indicated in the settings during the local network interface installation and port **8443** used by the web interface in the format:

IP- address: port

**Example: 192.168.100.2:8443**

As encryption is used during connection to the web interface, the internet browser may display an error saying the security certificate was not issued by a trusted certificate authority. In such a case you need to continue to the website by clicking on the corresponding button at the bottom of the window.

Error example in Google Chrome:



When you continued to the website using the IP address, a SafeUTM web interface authorization window will open. Type in the admin account login and password information you used during SafeUTM installation.

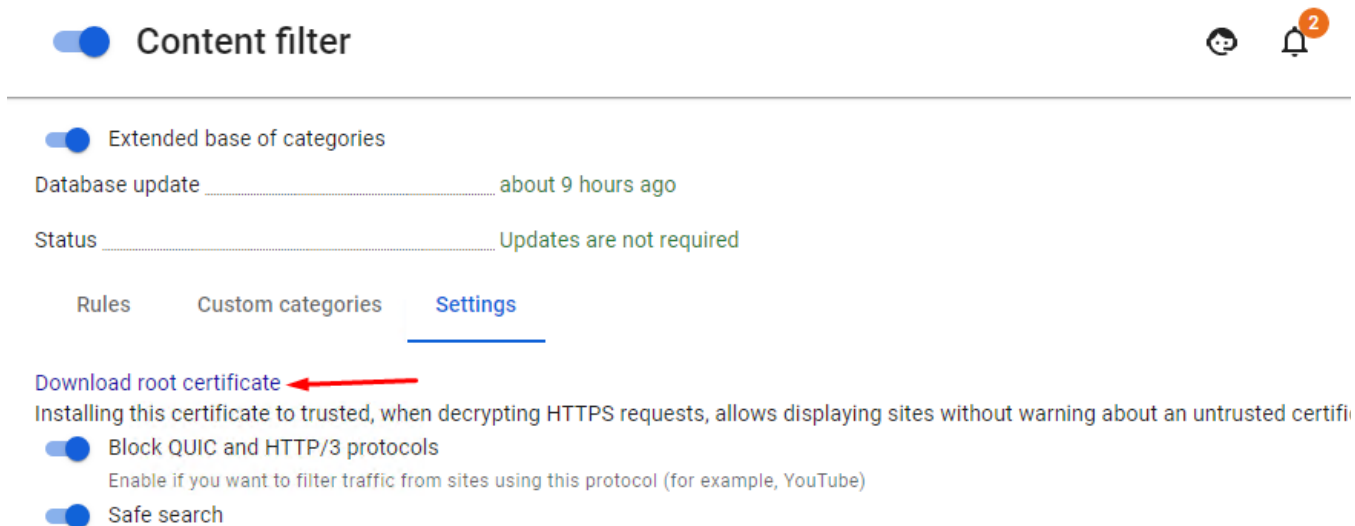
In order to avoid the error in the future, import the UTM root certificate into the browser.

There are two ways to download the certificate:

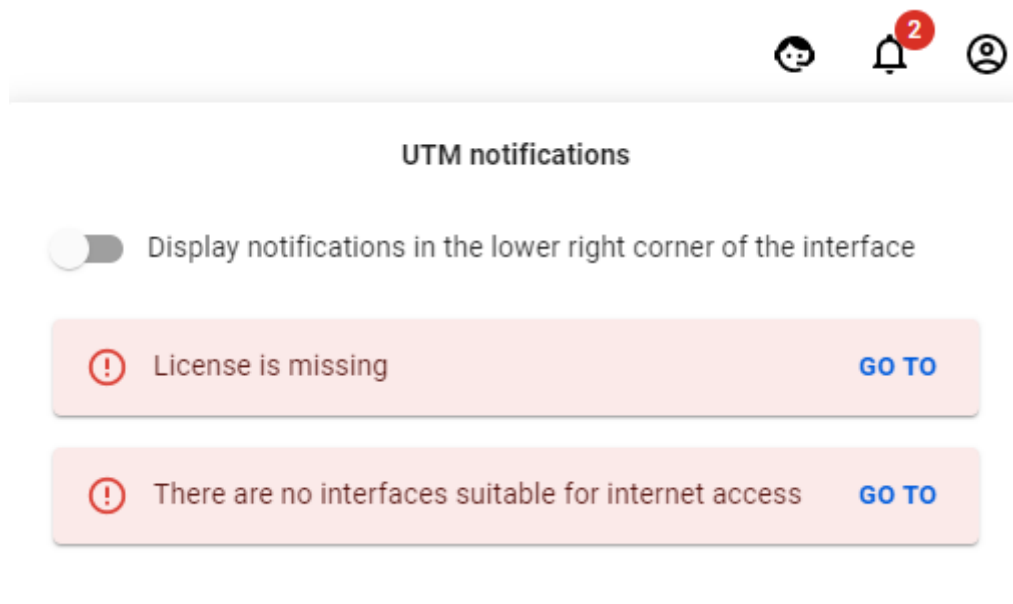
1. Go to **Services -> TLS Certificates**, and click on the **Download root certificate** icon:



2. Go to **Traffic rules -> Content filter -> Settings:**



After you first log in, you will see a few notifications that will advise you that in order to work correctly SafeUTM needs to set up a connection to the provider and register a server.



## Setting up a Connection to the Internet Provider

In order to set up a connection to the provider go to **Services -> Network Interfaces**.

### Ethernet connection setup

This type of connection requires setting up the parameters described in the table below.

Parameter	Note
Network card	It is necessary to identify the network adaptor that will be used to connect to the internet provider. To identify the adaptor, you can use either the manufacturer's name or MAC address.

IP-address and mask	The network credentials are assigned by the provider. Specify the IP address and netmask as CIDR or a four-octet number.
Default gateway	Specify the internet provider's IP address that will be used to connect to the internet.

If your provider supports auto-configuration of an external network interface using DHCP protocol, tick **Automatic Configuration via DHCP**.

In order to set up an Ethernet connection follow these steps:

- 1. Click on "+ Add" in the upper left corner and select **External Ethernet**.

## Network Interfaces

+ Add

Network cards

Local Ethernet

External Ethernet

Ethernet + PPTP

Ethernet + L2TP

Ethernet + PPPoE

IP address/mask	MAC address	Network card
0.1.103/16	08:00:27:a9:57:48	Intel Corporation 82579L Gigabit Ethernet Co

**Attention!**  
If you select **Local Ethernet** and set it up as **External Ethernet**, internet access will not be possible.

- 2. Choose the applicable Network card.
- 3. Fill out the following mandatory fields:


- Title
- IP-address/mask


- Gateway (or tick the *Automatic configuration via DHCP*);

## Network Interfaces

---

### Configure external Ethernet interface

Network card ..... Intel Corporation 82540EM Gigabit Ethernet Controller 

MAC address ..... 08:00:27:fb:fb:a9 

Number from 1 to 4094

☐ Automatic configuration via DHCP

4. Check that all the data are correct and click **Save**.

## Setting up other types of connection

If your provider uses another type of connection, you can see other setup manuals following the links below:

- [PPPoE connection](#)
- [PPTP connection](#)
- [L2TP connection](#)
- [Local Ethernet connection](#)

- **3G and 4G connection**
- **Simultaneous connection to several providers**

After connecting to the internet, it is necessary to register a server.

---

Revision #8

Created 22 August 2022 14:52:43 by Val Redman

Updated 11 October 2022 22:49:19 by Val Redman