

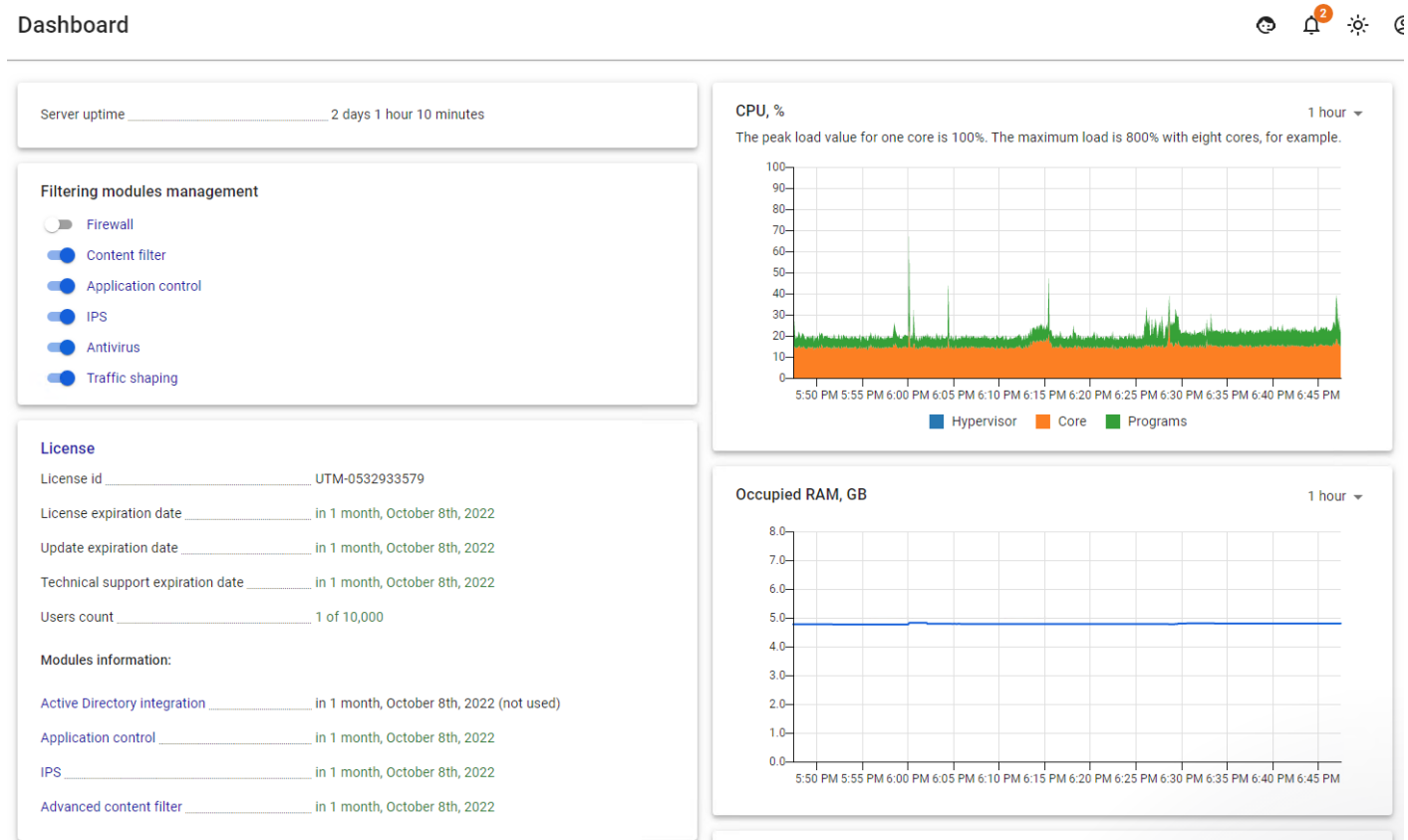
# Dashboard

Information about the server status.

This module allows you to view the following information about the server:

- Server uptime;
- Basic information about the **license**;
- CPU load over a certain period of time (5 minutes, 1 hour, 6 hours, 1 day, 7 days);
- RAM;
- Server temperature over a certain period of time;
- Active modules.

An example of a **Dashboard** module window can be seen in the screenshot below:



Revision #6

Created 22 August 2022 14:53:26 by Val Redman

Updated 11 October 2022 22:50:01 by Val Redman