

# Instructions for running PowerShell scripts

Use ready-made scripts downloaded from your server to create a VPN connection in Windows versions 8.1 and 10.

---

If you are using Windows 7, you must create the connection manually (see [Manually create user-side VPN connections](#)).

---

## Which VPN protocol should I choose?

With several options for possible VPN connections, choose protocols according to the following criteria:

1. **IKEv2/IPsec** is the best protocol in terms of performance and connection reliability.
  2. **SSTP** is a protocol based on TCP and SSL. Choose it if the IKEv2 connection does not go through your provider.
  3. **L2TP/IPsec** is reliable in terms of encryption, but not the most optimal in terms of speed and performance.
- 

## How do I run a PowerShell script?

1. Download the script:

### From SafeUTM:

- By navigating to the section **Users -> VPN connections**
- Set the flag for the required connection protocol, if required, fill in the fields and click **Save**
- Click on the link **PowerShell - script to configure connections**

## VPN connections ▾

Stopped

General

Fixed VPN IP addresses

### General settings

Network for VPN connections

192.168.0.0/16

☐ PPTP connection

☐ PPPoE connection

☐ IKEv2/IPSec Connection

Domain

safeutm.com

☐ SSTP Connection

Domain

Port

1443

☒ L2TP/IPSec Connection

PSK

.....

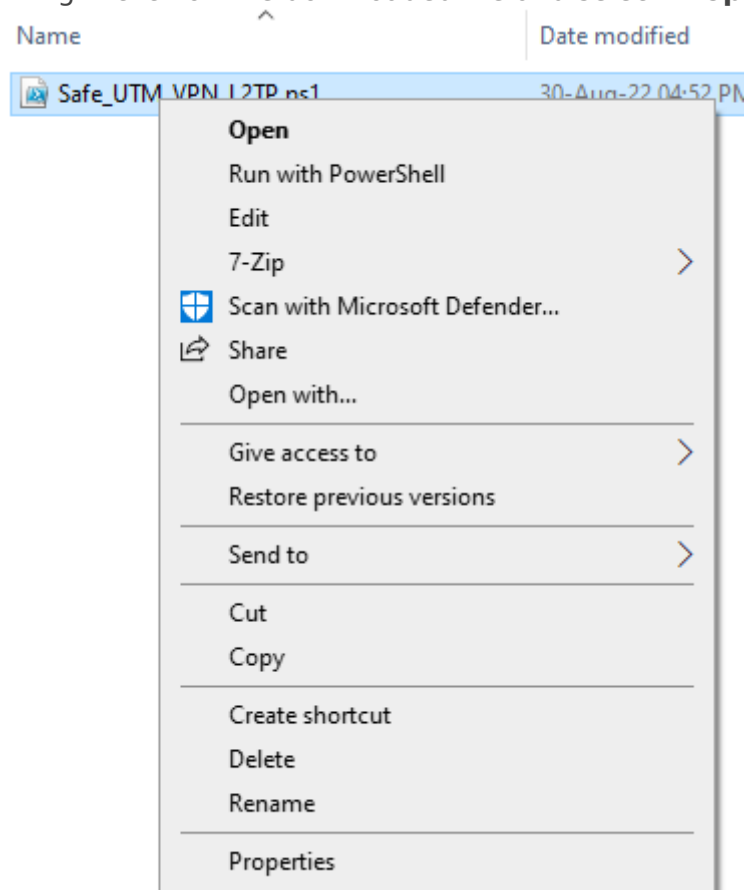


[PowerShell - script for configuring connections](#)

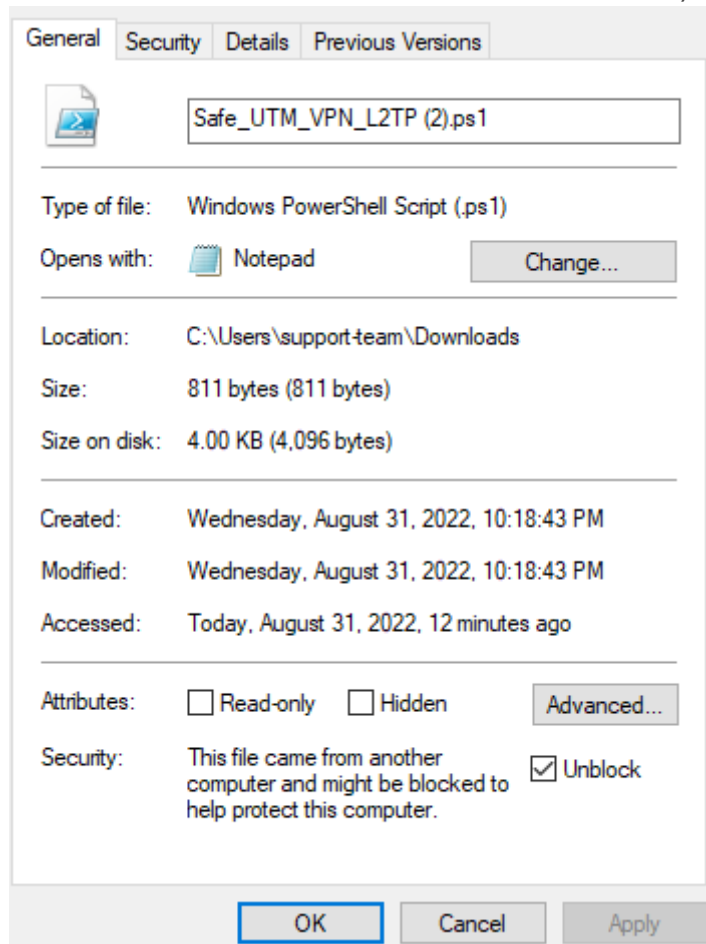
Save

- Transfer the downloaded file to the device where you want to create a VPN connection.

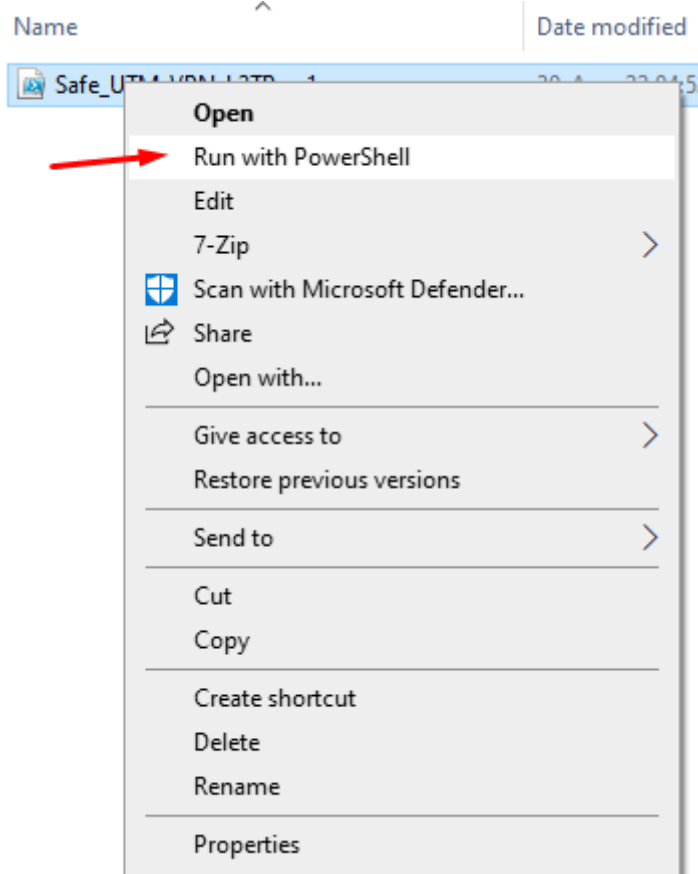
2. Right-click on the downloaded file and select **Properties** from the context menu.



3. Check the box **Unblock** in the lower right corner of file properties (by default, the OS blocks the execution of files downloaded from the Internet)



4. Right-click on the file again and select **Run in PowerShell** in the context menu.



If the error "Script execution is disabled on this system" appears, you need to enable script execution by running the command in PowerShell (call it up from the Start menu): `Set-ExecutionPolicy Unrestricted`

5. Answer **Yes** to the question about making changes to your computer.

6. The connection is created. Click **Connect** in the list of your networks.

---

## What should I do if I can't run the script?

You may not have enough rights to run scripts or PowerShell is not installed on the system.

Use the instructions for creating a connection in **Windows 10** and **Windows 7**.

---

Revision #5

Created 24 August 2022 21:45:04 by Val Redman

Updated 13 October 2022 14:44:13 by Val Redman