

# User tree

In the SafeUTM management interface, users are displayed as a tree.

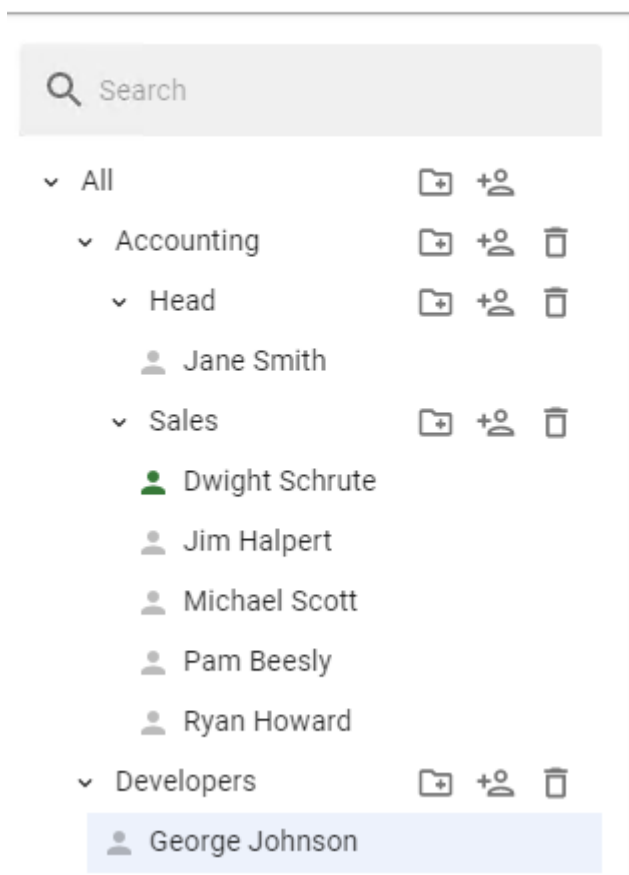
Users can be organized into trees. The group nesting level is not limited.

The user account tree is available in **Users -> User & Group**.

SafeUTM implements the principle of inheritance, which makes it easy to set and change parameters common for users, defining them for the parent group, for example, quotas or remote VPN access. The principle of inheritance is very convenient for performing management operations related to all users in the group.




An example of a user tree can be seen below:

## User & Group



The user's icon can be colored differently. The table below provides a description of each color of the user's icon:

User Account Status	Description
---------------------	-------------

	The user has completed the authorization procedure and has been granted internet access.
	Authorization restriction has been set in the <a href="#">User Settings</a> .
	The user has not completed the authorization procedure and has not been granted internet access.

---

Revision #6

Created 22 August 2022 14:53:44 by Val Redman

Updated 11 October 2022 23:53:32 by Val Redman