

Administrators

Managing Administrators

It is possible to set the credentials of several administrators of the SafeUTM server to access the settings web interfaces.

The pre-installed administrator account cannot be deleted, you can only change its data – name, and password – using the corresponding elements in the **Management** column.

You can create additional server administrators and manage accounts in the section **Server Management -> Administrators**.

Administrators





For SSH access, use the administrator's login and password. SSH is available only to administrators with the "Administrator" role.

☒ Access to the web interface from external network

☒ Access via SSH from the local network

☒ Access via SSH from the external network

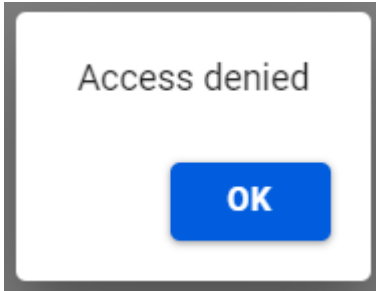
[+ Add](#)

Name ↑	Login	Role	Operations
Administrator	testadmin	Administrator	 

To add a new administrator, click **Add** and fill in the following fields:

- **Name** - Enter the name of a new administrator. The value must be 42 characters maximum.
- **Login** - Enter the login of a new administrator. The value must be 42 characters maximum.
- **Password/repeat password** - Enter the password of a new administrator. The value must be 10 characters minimum. We recommend using complex passwords containing Latin lowercase and uppercase letters, numbers, and special characters.

- **Role** - select the **Administrator** role or **View only**. When choosing **View only** role, the administrator will not be able to make any settings in the web interface, because when you try to make changes, a window with the error "Access denied" will appear.



Access to Web Interface from External Network and Remote Access via SSH

- To enable access from the external network, switch the slider to **Enabled** near item **Access to web interface from external network**. This function helps to administer SafeUTM remotely.
- To enable SSH access to the server from local or external networks, switch the slider to **Enabled** near the corresponding items (not recommended). Access is provided via TCP port 22. Password-guessing attempts are blocked automatically. Use the command **local-menu** to launch the menu, and command **mc** to launch the file manager.

For more information about configuring the connection to the web interface for remote access, see the article [Remote Access for Server Management](#).

Administrator Password Recovery

For more information about administrator password recovery, see this article by following the [link](#).

Revision #5

Created 27 August 2022 18:06:49 by Val Redman

Updated 13 October 2022 15:51:15 by Val Redman