

Encrypted DNS Setup (DoH/DoT)

This guide explains how to set up **DNS-over-HTTPS (DoH)** / **DNS-over-TLS (DoT)** links using the **Encrypted DNS** section of the SafeDNS Dashboard and how to enable **DoH/DoT** in the **SafeDNS Agent**.

Creating DoH/DoT link

Please note that DoH/DoT links with the filtering policy token are available on Pro, Pro Plus, and Education & Non-Profit plans only. Other plans can use the DoH/DoT link without the filtering policy (explained below).

Links with the filtering policy

This type of link works in any network and does not require adding the IP address of the network in the SafeDNS Dashboard.

1. Navigate to the SafeDNS **Dashboard** > **Settings** and create a new record in the **Encrypted DNS** table with a required filtering policy.

Encrypted DNS

Add DoH/DoT

Enter name Default

Name

Name	Policy	DoH/DoT	
Office	Default	Copy link	
Guests	Default	Copy link	

2. Click **Copy link**.

Links without the filtering policy

Please note that this method works only when the device with the link is located in the network specified in the SafeDNS Dashboard.

1. Navigate to the SafeDNS **Dashboard** > **Settings** and copy your IP address in the "**Enter an IP address or DynDNS**" box. Click "**Add**".

Main

- User administration
- Settings **1**
- Devices **2**
- Policy
- Schedule
- Advanced

Categories

- Allowlist
- Denylist
- Stats
- New Stats (Beta)
- Help
- Account

Devices | Policy | Schedule | Advanced

Video instruction for setting up

Your IP address **Copy ip address**

IPv4 DNS-servers addresses
195.46.39.39
195.46.39.40

IPv6 DNS-servers addresses
2001:67c:2778::3939
2001:67c:2778::3940

DoH address

IP addresses/DynDNS 0/13

Add IP address or DynDNS

Enter an IP-address or DynDNS Default

Past ip address **Select filtering policy**

IP address or DynDNS

IP address/DynDNS	Policy	Comment
List is empty		

2. Use **https://doh.safedns.com** as a DoH/DoT link.

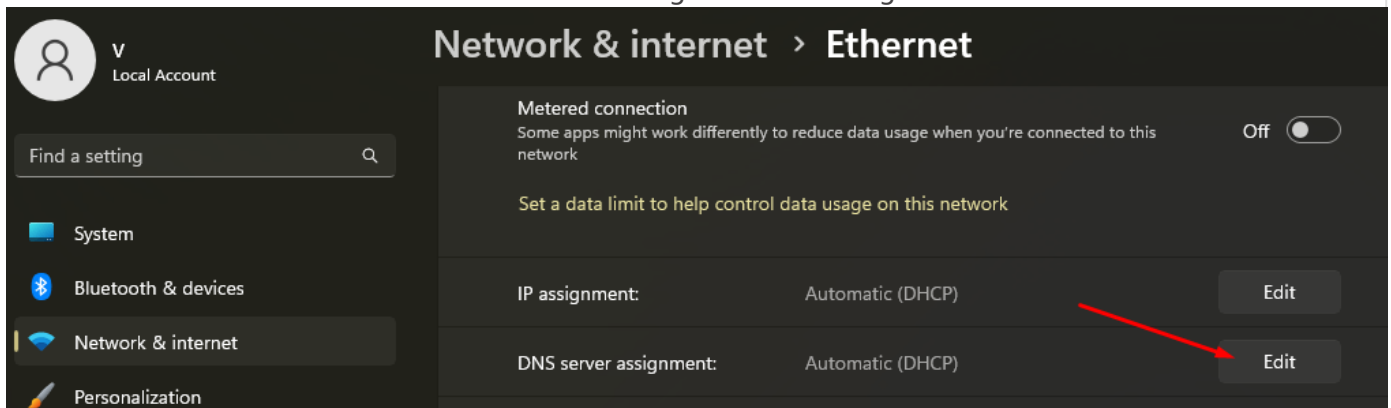
Using DoH/DoT links

Links can be used on various devices, operating systems, and browsers. Below are some popular examples.

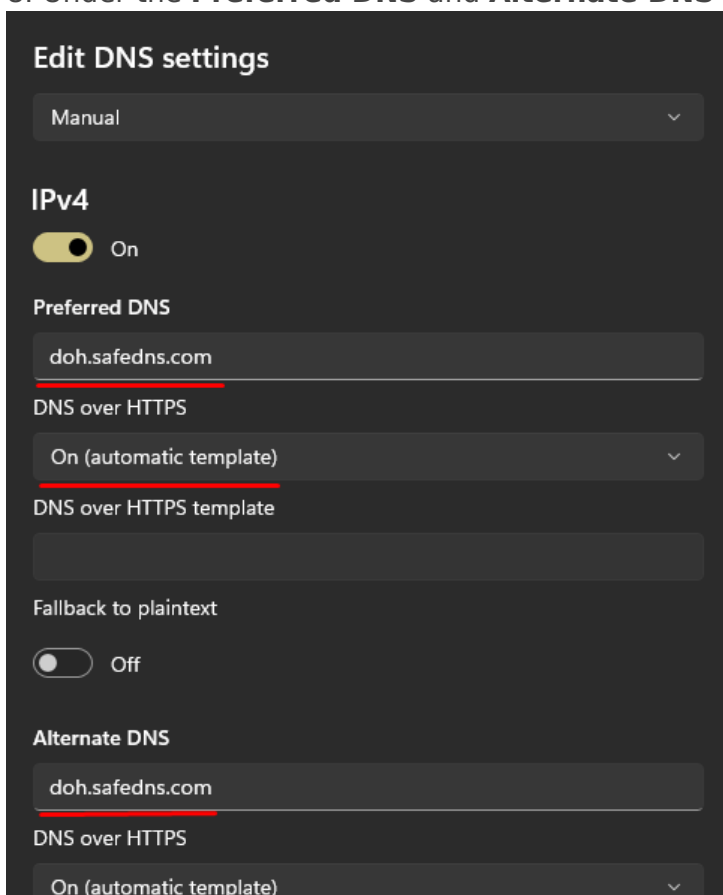
Operating systems

Windows 11

1. Open **Start** on Windows 11.
2. Search for **Settings** and click the top result to open the app.
3. Click on **Network & internet**.
4. Click the **Ethernet** or **Wi-Fi** tab (depending on the active connection).
If you have a Wi-Fi connection, click on the connection properties setting to access the settings.
5. Click the **Edit** button in the "DNS server assignment" setting.



6. Select the **Manual** option from the drop-down menu.
7. Turn on the **IPv4** toggle switch.
8. Under the **Preferred DNS** and **Alternate DNS** sections, enter the created **DoH/DoT link**.



9. Use the **DNS over HTTPS** drop-down menu and select the **On (automatic template)** option.
10. Turn off the **Fallback to plaintext** toggle.
11. Click **Save**.

Android Private DNS

1. Navigate to **Settings > Network & internet**. (on some devices - More connectivity options).
2. Select **Advanced > Private DNS**. (on some devices it is under **Advanced** or **More** options).

More connectivity
options

Airplane mode



Private DNS

Off



3. Select the **Private DNS provider hostname** option.

Private DNS

Off

Auto

✓ Private DNS provider hostname

Custom name

837527453.doh.safedns.c
om

4. Add the **DoH/DoT link** and select **Save**.

Private DNS provider hostname

837527453.doh.safedns.com

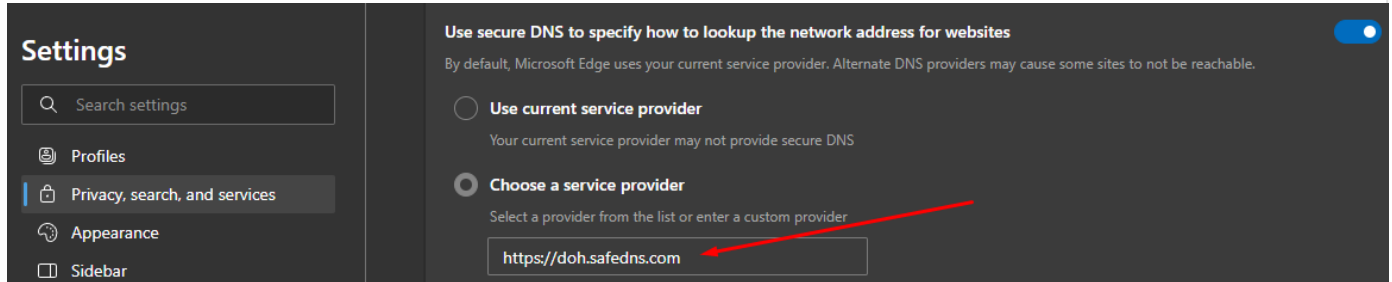
Cancel

Save

Browsers

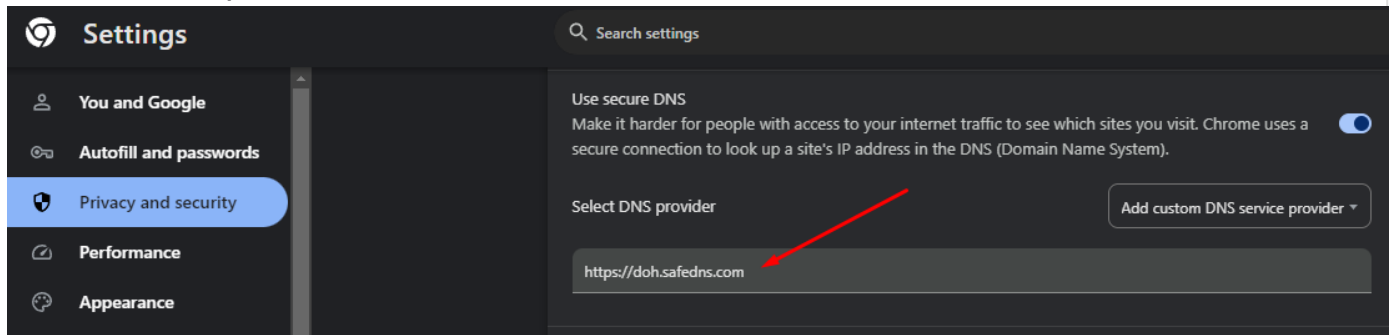
Microsoft Edge

1. Open **Settings**.
2. Navigate to **Privacy, search, and services**.
3. Scroll down to **Security**.
4. Select **Choose a service provider**.
5. Add the **DoH/DoT link**.



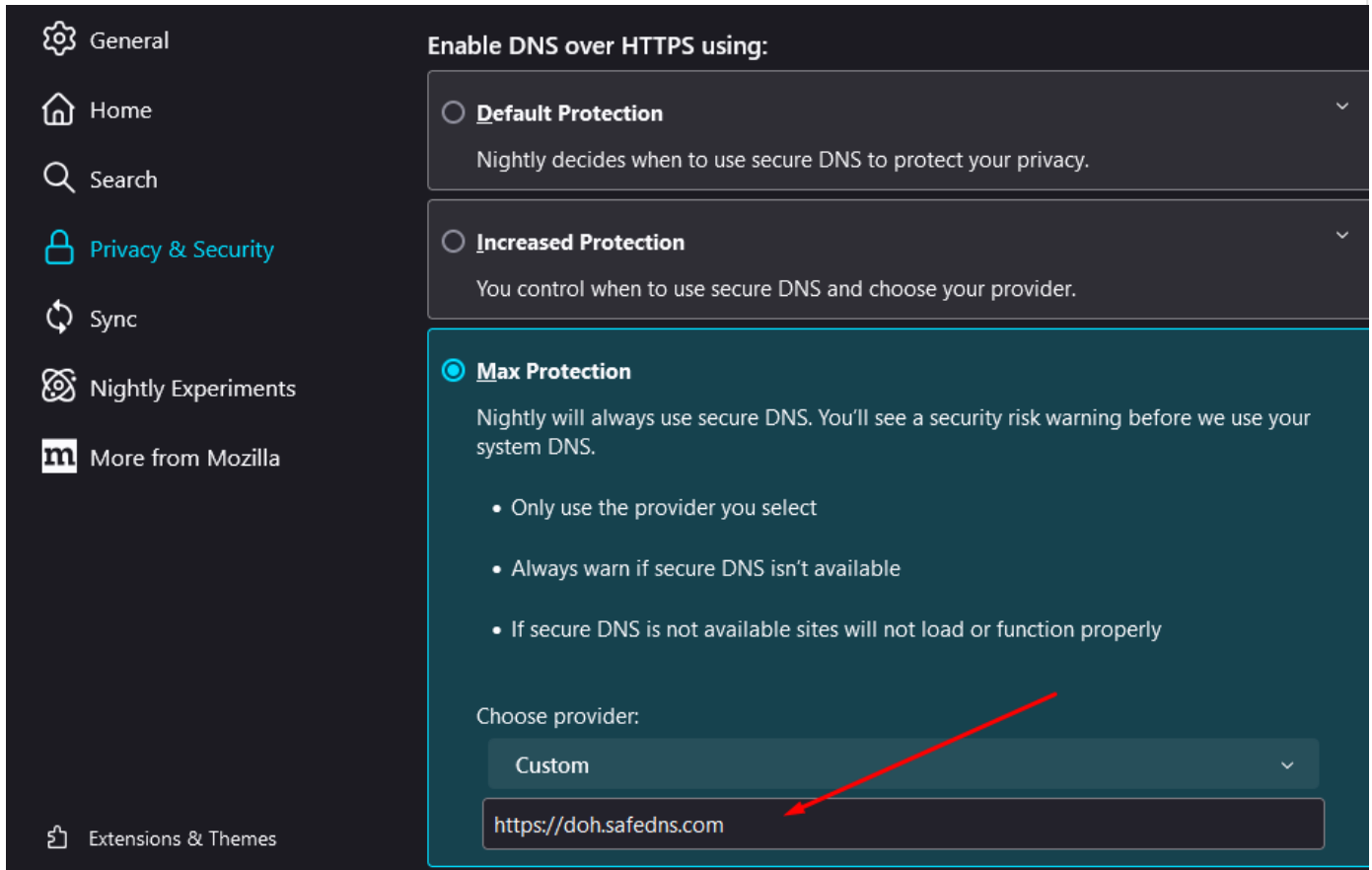
Google Chrome

1. Open **Settings**.
2. Navigate to **Privacy and security** and click on the **Security** section.
3. Scroll down to **Use secure DNS**.
4. Choose **Add custom DNS service provider** from the dropdown menu.
5. Add the **DoH/DoT link**.



Mozilla Firefox

1. Open **Settings**.
2. Select **Privacy & Security** and scroll down to the **DNS over HTTPS** section.
3. Select **Max Protection**.
4. Click the "**Choose provider**" dropdown menu and select **Custom**.
5. Add the **DoH/DoT link**.



DNS-over-TLS

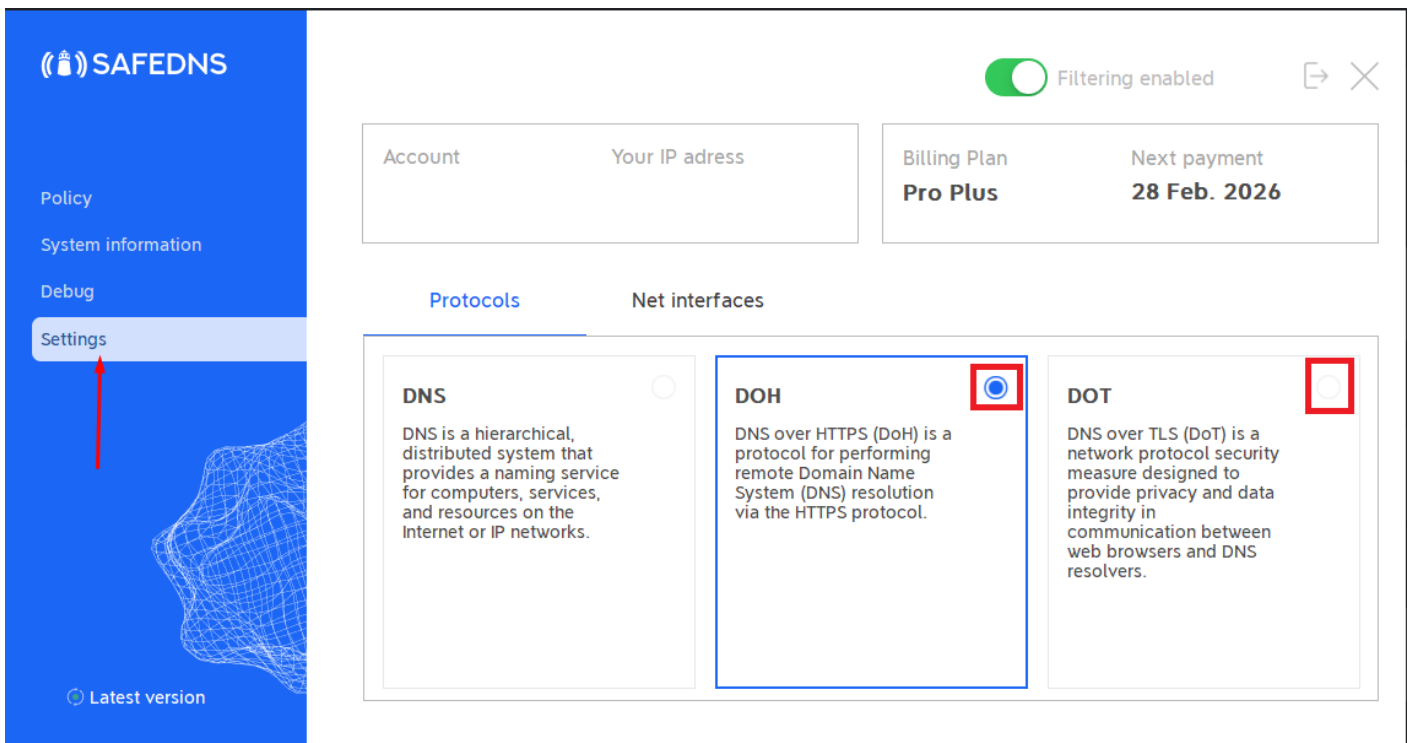
Created links can also be used in devices and applications that support DoT.

You can also set up DoT without creating the link in the Encrypted DNS section [using this guide](#).

Using DoH/DoT in the SafeDNS Agent

This method does not require a link. It is provided as part of the [Mac](#) and [Windows](#) SafeDNS Agents.

1. Open the SafeDNS Agent interface.
2. Navigate to **Settings**.
3. In the **Protocols** section, click on the **DOH** or **DOT** to use the respective protocol.



Revision #6

Created 24 July 2025 11:15:41 by Val Redman

Updated 2 February 2026 17:45:05 by Val Redman