

# Windows DNS Setup

## Video tutorial

Watch this video tutorial to learn how to deploy SafeDNS on a Windows-based PC with a static IP without the installation of any software.

This video tutorial was recorded for Windows 10. Navigate to the section below for a specific Windows version.

<https://www.youtube.com/embed/sQdADIMYRmA>

## Step-by-step guide

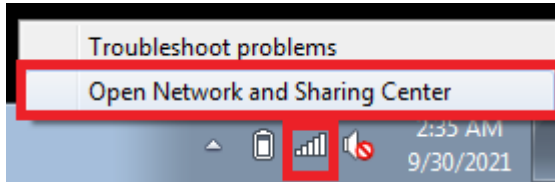
1. Navigate to the SafeDNS **Dashboard > Settings** and copy your IP address in the "**Enter an IP address or DynDNS**" box. Click "**Add**".

The screenshot displays the SafeDNS dashboard interface. On the left is a sidebar menu with options: Main, User administration, Settings (marked with a red arrow and '1'), Devices (marked with a red arrow and '2'), Policy, Schedule, and Advanced. The main content area has tabs for Devices, Policy, Schedule, and Advanced. The 'Devices' tab is active, showing a 'Video instruction for setting up' link. Below this, there are fields for 'Your IP address' (with a red box and arrow pointing to it), 'IPv4 DNS-servers addresses' (195.46.39.39, 195.46.39.40), 'IPv6 DNS-servers addresses' (2001:67c:2778::3939, 2001:67c:2778::3940), and 'DoH address' (https://doh.safedns.com). A red arrow points to the 'Your IP address' field with the text 'Copy ip address'. Below these fields is a section titled 'IP addresses/DynDNS' with a '0/13' counter. It contains a form to 'Add IP address or DynDNS' with a text input field (labeled 'Enter an IP-address or DynDNS' with a red arrow and 'Past ip address'), a dropdown menu (labeled 'Default' with a red arrow and 'Select filtering policy'), a 'Comment' field, and 'Add' and 'Edit as List' buttons. At the bottom, there is a table with columns for 'IP address/DynDNS', 'Policy', and 'Comment', currently showing 'List is empty'.

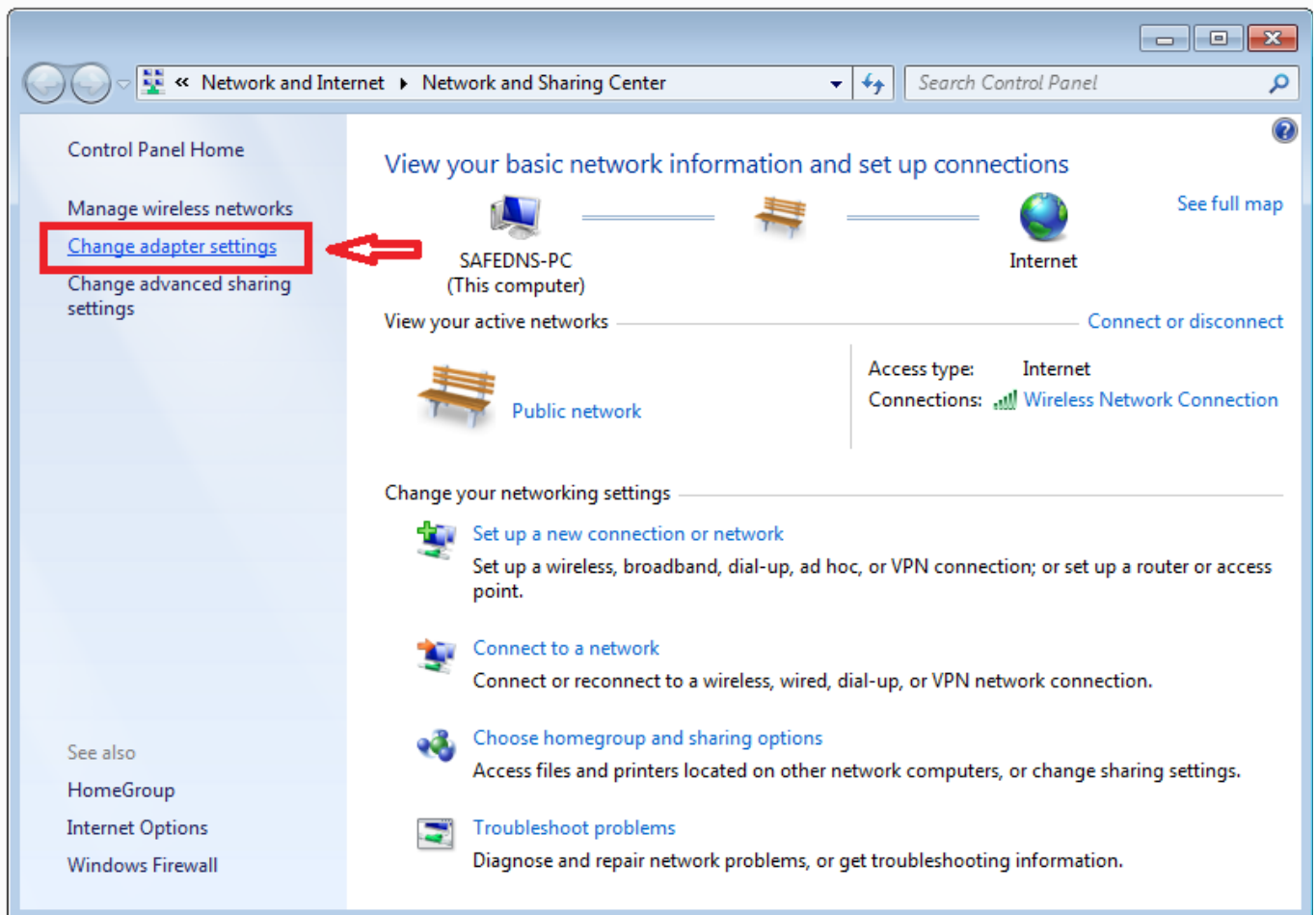
## If you have Windows 7 or 8

### Windows 7 network settings

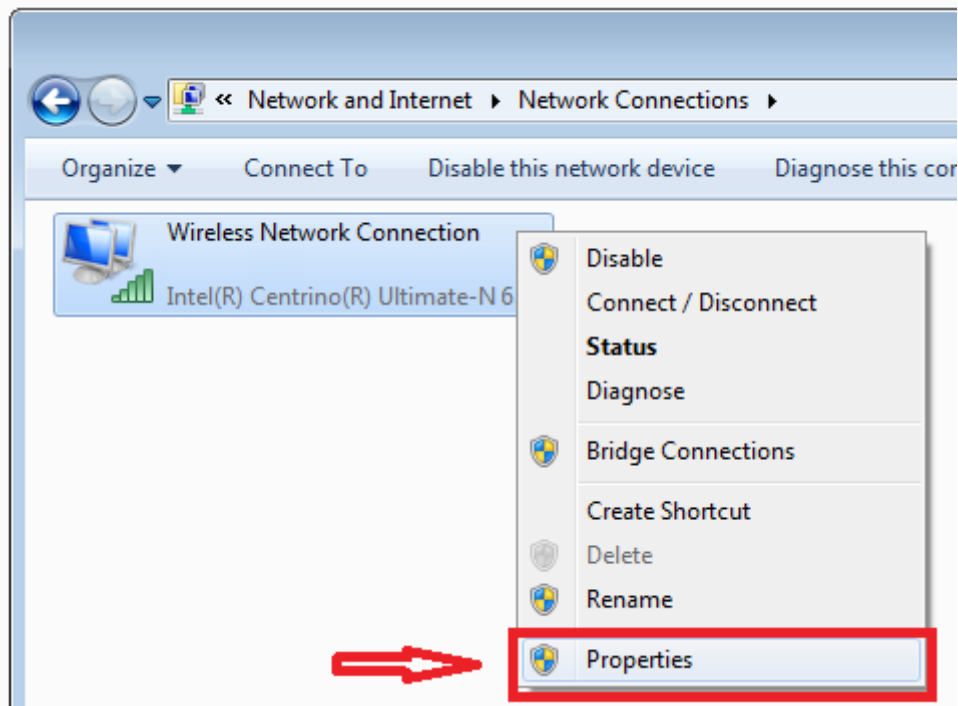
2. From the Taskbar pane, **right-click** on the Wi-Fi (or LAN) icon and select **Open Network and Sharing Center**:



3. Select **Change adapter settings**.



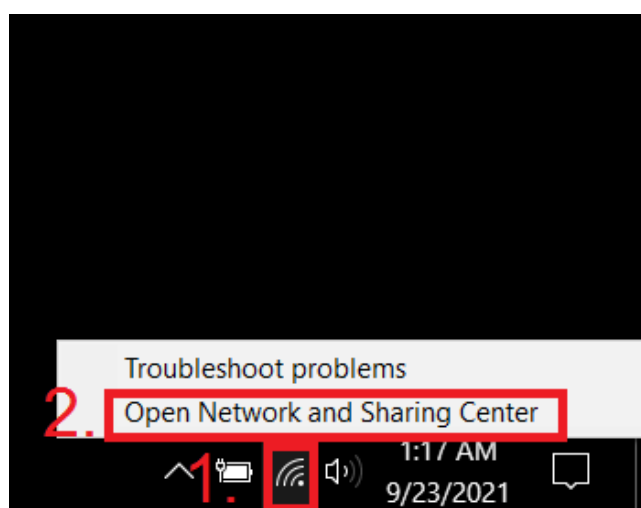
4. **Right-click** on the current internet connection, and select **Properties**. If the system shows the security notification, click Yes.



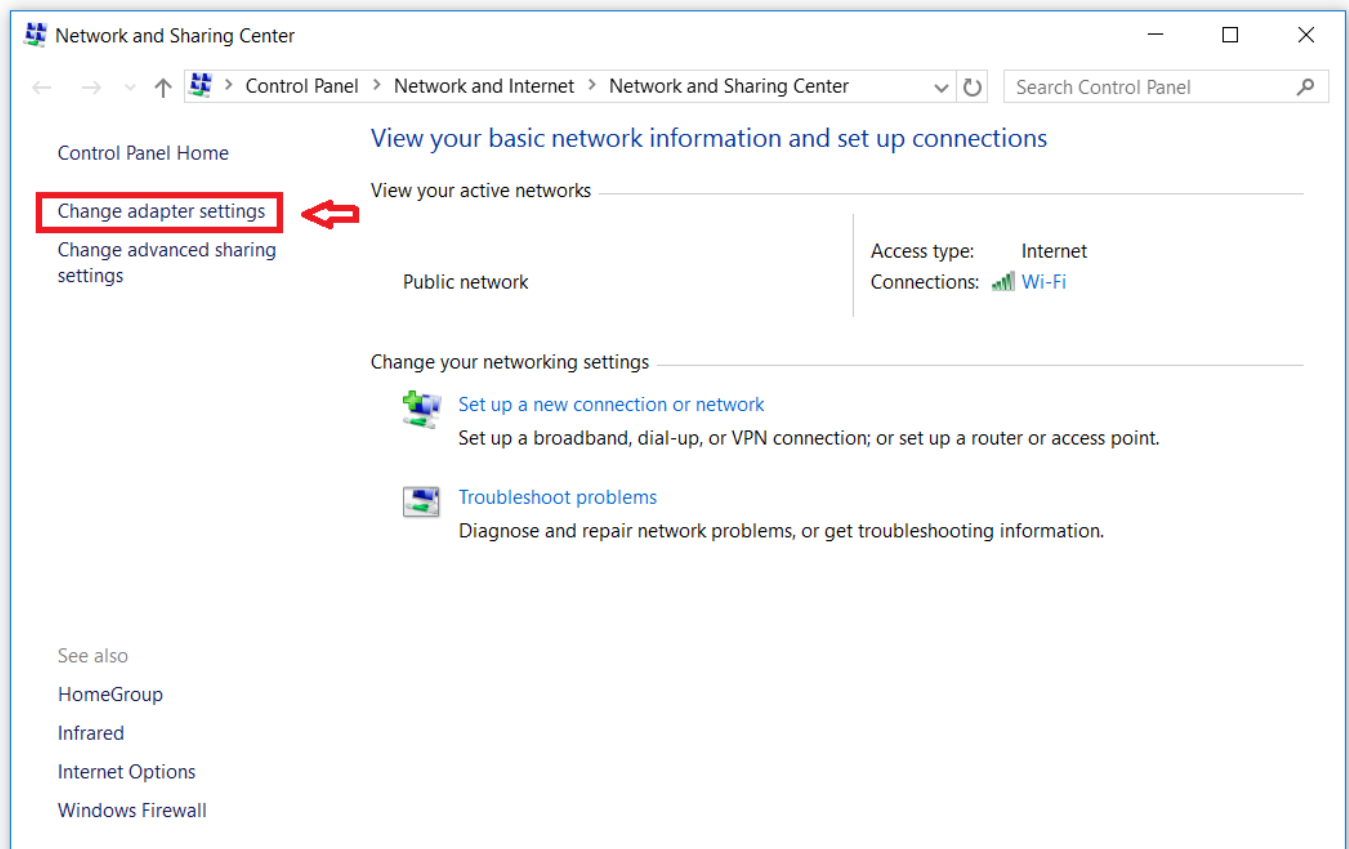
If you have Windows 10

### Windows 10 network settings

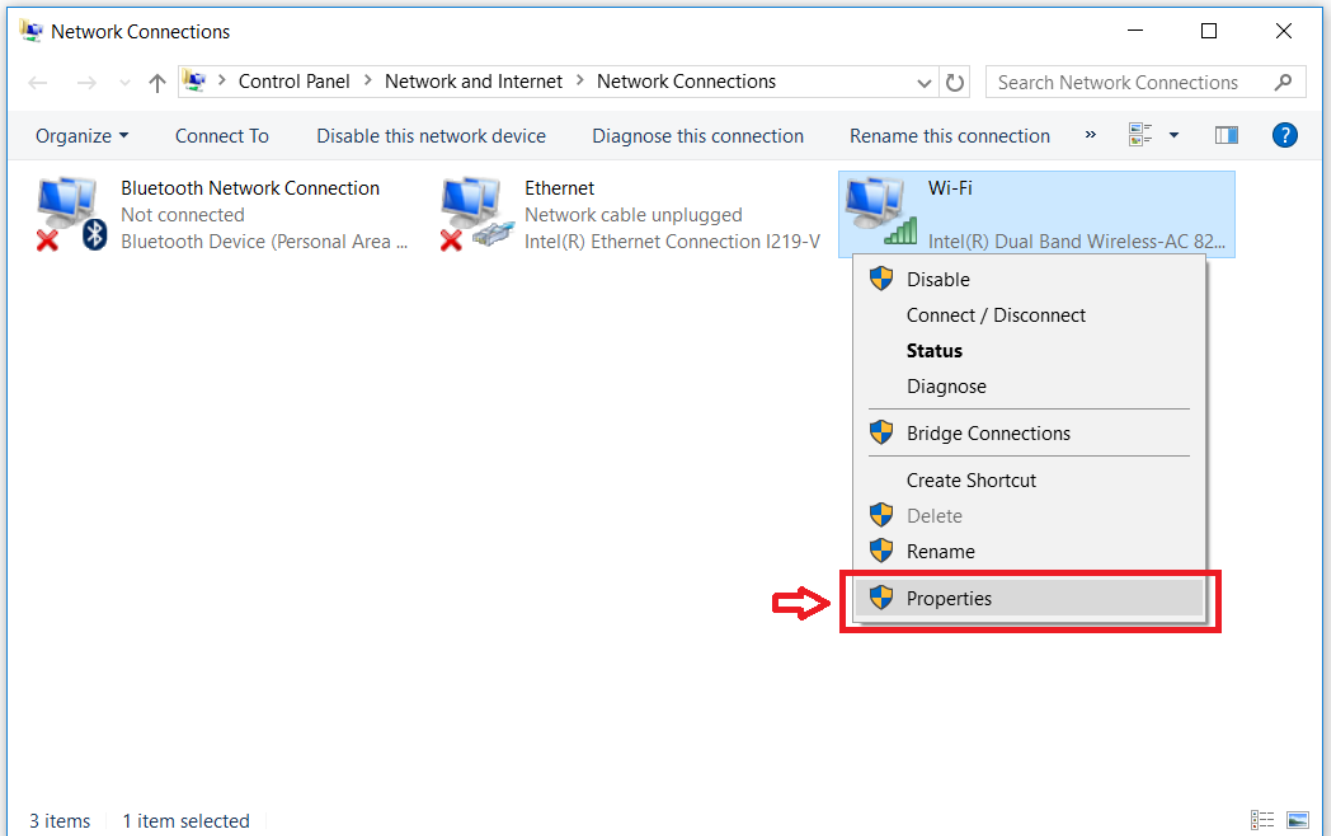
2. From the Taskbar pane, **right-click** on the Wi-Fi (or LAN) icon and select **Open Network and Sharing Center**:



3. Select **Change adapter settings**.



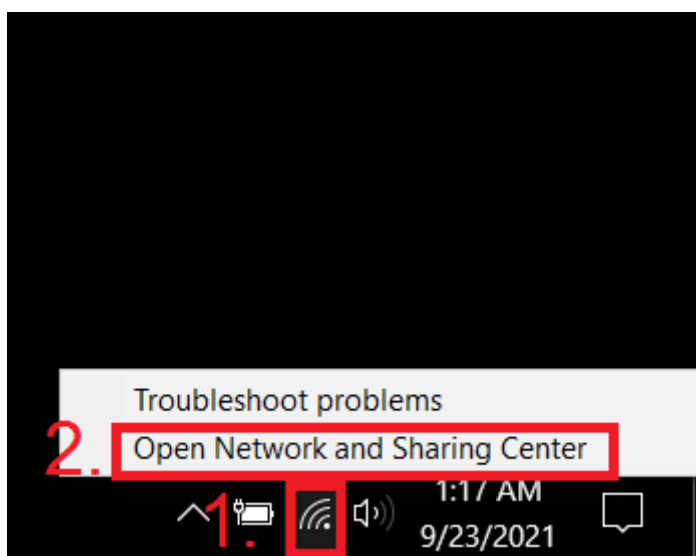
4. **Right-click** on the current internet connection, and select **Properties**. If the system shows the security notification, click Yes.



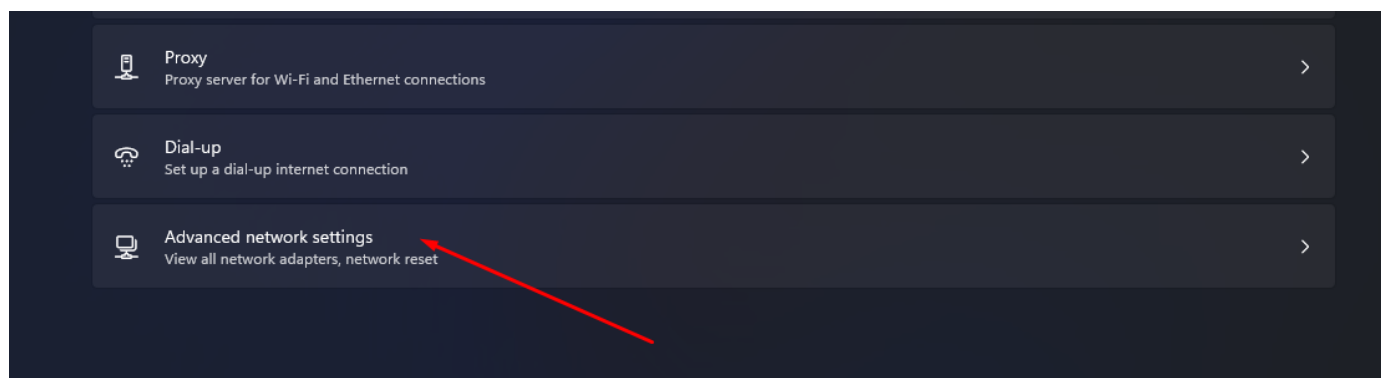
## If you have Windows 11

### Windows 11 network settings

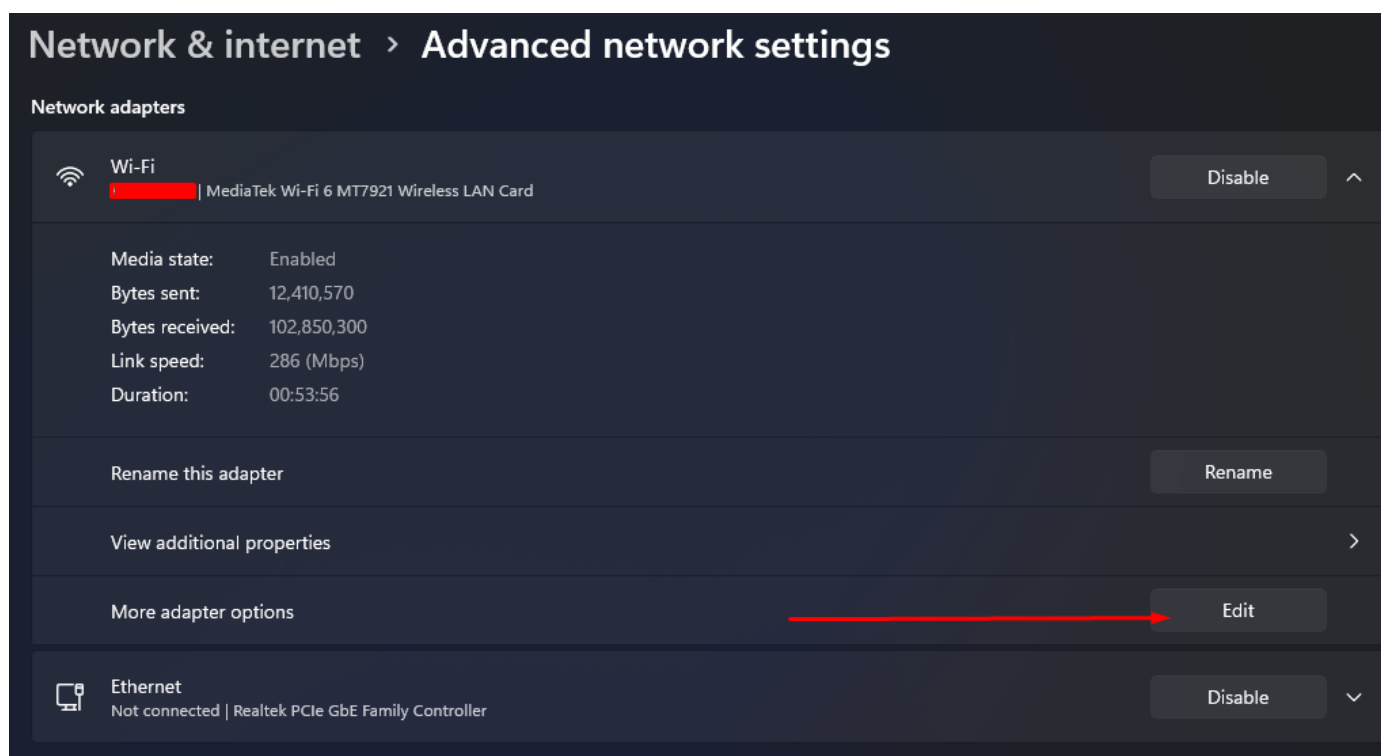
2. From the Taskbar pane, **right-click** on the Wi-Fi (or LAN) icon and select **Open Network and Sharing Center**:



3. Select **Advanced network settings**.



4. Click on the active network adapter (usually the top one), and click **Edit** in the **More adapter options** section.

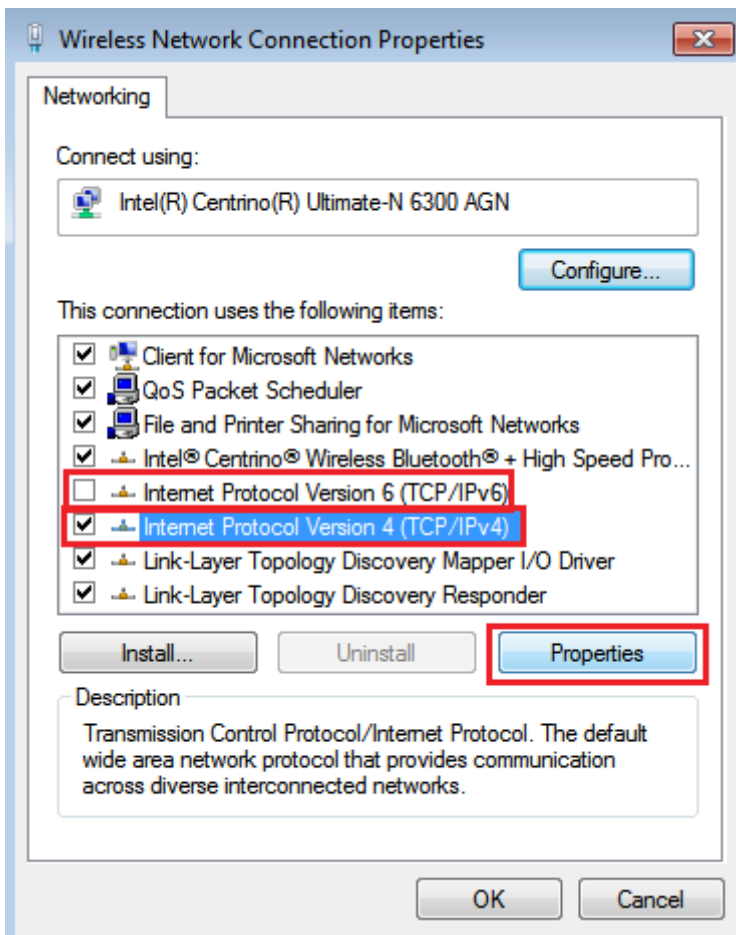


We recommend disabling **Internet Protocol Version 6**.

This will simplify the installation process and will not affect the quality of your internet connection.

If you wish to use IPv6 DNS, you will need to add your IPv6 address to the SafeDNS Dashboard (Step 1) and enter IPv6 DNS addresses similar to Step 6 below for **Internet Protocol Version 6**.

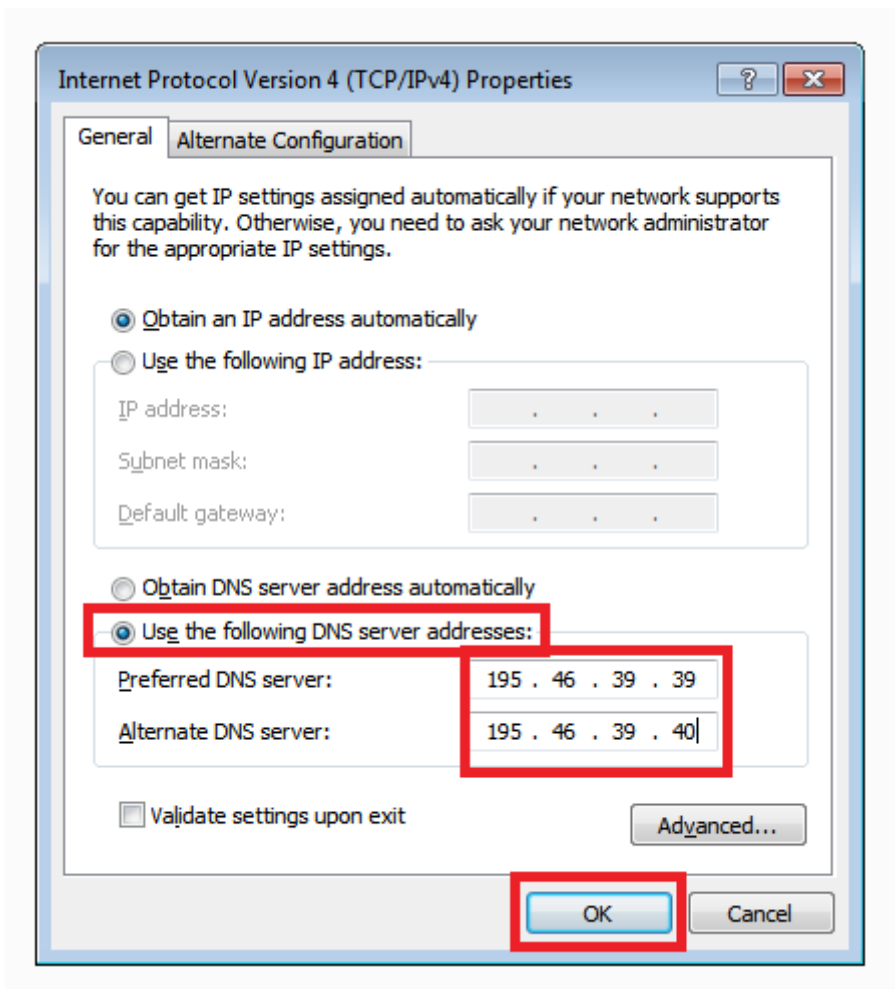
5. Select **Internet Protocol Version 4**, and click on **Properties**.



6. Select the option **Use the following DNS server addresses**, enter the following SafeDNS addresses:

**Preferred DNS server: 195.46.39.39**

**Alternate DNS server: 195.46.39.40**



7. Click the **OK** button to save your settings and close the network properties window.

**You have successfully configured the filtering for a Windows-based device.**

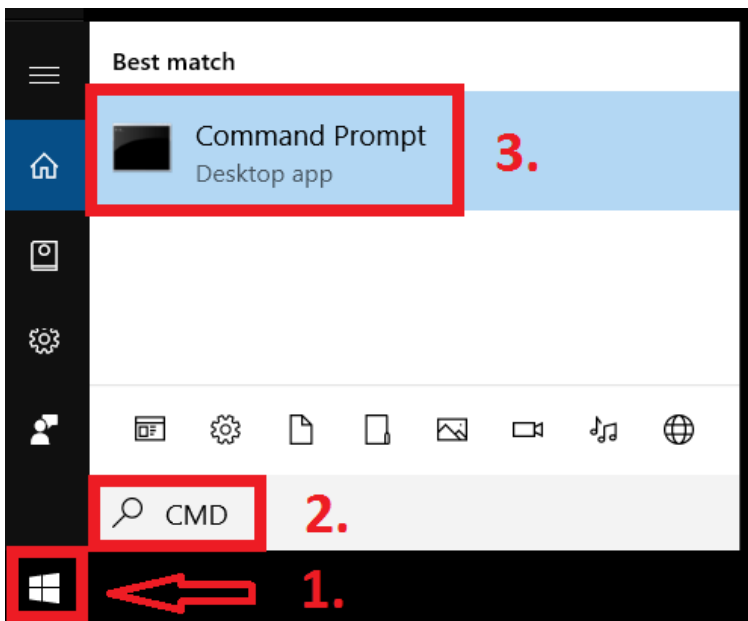
---

## Troubleshooting

Please note that Windows may still be using the addresses saved in the local DNS cache. It is recommended to clean it using the following steps:

1. Press "**Start**"
2. Search for "**cmd**" and open the suggested application





3. Enter and run the following command in the opened window **ipconfig /flushdns**

```
C:\Windows\system32\cmd.exe
Microsoft Windows [Version 10.0.14393]
(c) 2016 Microsoft Corporation. All rights reserved.

C:\Users\safedns>ipconfig /flushdns

Windows IP Configuration

Successfully flushed the DNS Resolver Cache.
```

[Learn more about how to clear the DNS cache.](#)

Please note that settings take 5-7 minutes to apply.  
Stats and filtering status update every 10 minutes.

Revision #3

Created 24 July 2025 09:23:12 by Val Redman

Updated 24 July 2025 10:30:54 by Val Redman